



## NONWOVEN TURN-KEY LINES AND MACHINES

MECCANICHE LISCIOOTTO SRL: VIA TENENTE ZANON 49C , ROSSANO VENETO-ITALY

TEL: +39 0424-540823

WEB SITE: [www.lisciotto-srl.com](http://www.lisciotto-srl.com)

EMAIL: [commerciale@lisciotto-srl.it](mailto:commerciale@lisciotto-srl.it)

# THE COMPANY

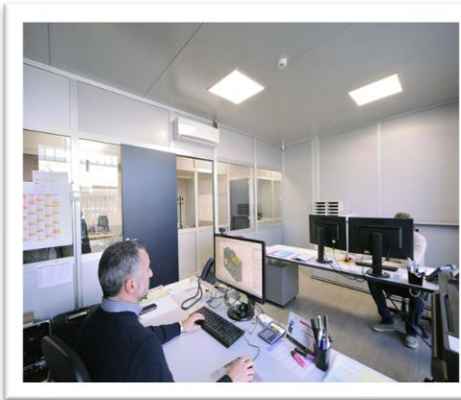


Meccaniche Lisciotto proposes itself on the market as a highly specialized company in the production of spunbonding lines and machines for nonwovens. The experience and achievements made over the years make Meccaniche Lisciotto the ideal partner for the construction of new production lines; the company is composed of a team of engineers with proven experience in the sector and is able to follow the customer by offering a complete service, in particular it offers the line design, machines manufacturing, supervision of line installation and the line start up by his technologist;

The company headquarter is located in Rossano Veneto (VI), North-Eastern Italy.

The company covers an area of approximately 2.500 sqm which there are the mechanical production department and the equipment assembly and testing.

# *DESIGN & ASSEMBLY DEPARTMENT*



# SPUNBONDING LINES FOR GEOTEXTILE & ROOFING CARRIERS

## CHARACTERISTICS:

- Needle punched working width: up to 6500 mm
- Supports for membranes: up to 6 rolls (1,02 m each)
- Production capacity: up to 10000 ton/year
- Needle punched weights: 100-600 gsm
- Supports for membranes: 80-250 gsm
- Raw material: PET Chips, PET flakes

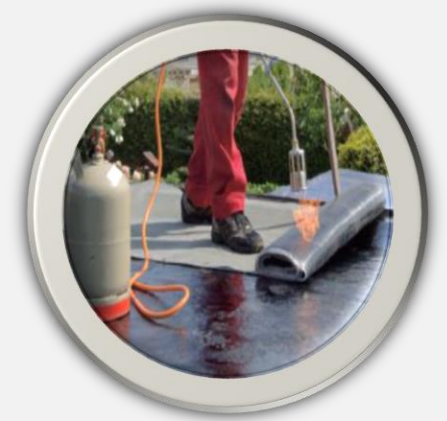
## PRODUCTS APPLICATION:

### NEEDLE-PUNCHED NON-WOVENS

- Geotextiles for roads, railways, airports, landfills, civil engineering, hydraulic works etc;
- Carpet backing.

### IMPREGNATED NON-WOVENS

- Supports for waterproofing bituminous membranes, for roof covering, roads, viaducts, foundations, flat roofs, roof gardens, underflooring;
- Hydraulic works;





# SPUNBONDING LINES FOR HYGIENE & MEDICAL, GEOTEXTILE AND INDUSTRIAL APPLICATION & MELT BLOWN LINES

## CHARACTERISTICS:

- Working width: up to 5500 mm
- Production capacity: up to 10000 TON/year
- weights: 10-600 gsm
- Raw material: PP Chips

## PRODUCTS APPLICATION:

- AUTOMOTIVE: seat components, linings;
- SANITARY AND MEDICAL: bedding for hospitals, surgical drapes and bandages, surgical gowns, gauzes, curtains, caps, pillow covers, gloves, face masks, shoe covers;
- HYGIENIC: baby and adult diapers, various feminine hygiene products, tampons, face wipes, slippers;
- AGRICULTURE: hobby gardening, hot and cold air piping, garden covering material, protective material from agriculture vermin, protective material from heavy rain and overheating, ropes and twines, crop covers, turf protection, weed-control fabrics, root bags, containers, matting, other types of covers;
- FURNITURE UPHOLSTERY: pillow sofa, mattress lining, mattress internal layer protection, spring pockets, table-cloths, carpets, curtains, bedsheets, wipes/napkins;
- SHOES AND GARMENTS: shoe heels, cleaning, internal shoe-linings, patchwork for garments, dust covers, outdoor applications, coveralls, pillow cases, airline headrests, interlinings, clothing and glove insulation, bra and shoulder padding, protective clothing;
- TECHNICAL FILTERS: air filtration, humidity filtration.



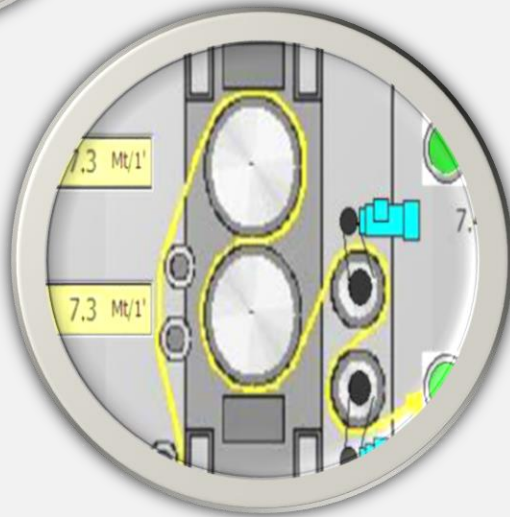
## NONWOVEN MACHINES FOR SPUNBONDING LINES, CARDING LINES, FINISHING LINES, FELT LINES, SPUNLACE

- Thermobonding calenders
- Cooling calenders
- Padder/foulard
- Ovens
- Omega Dryer
- Drum dryer
- Automatic winders

# THERMOBONDING CALENDERS ENGRAVED CALENDERS COOLING CALENDERS

## TECHNICAL CHARACTERISTICS

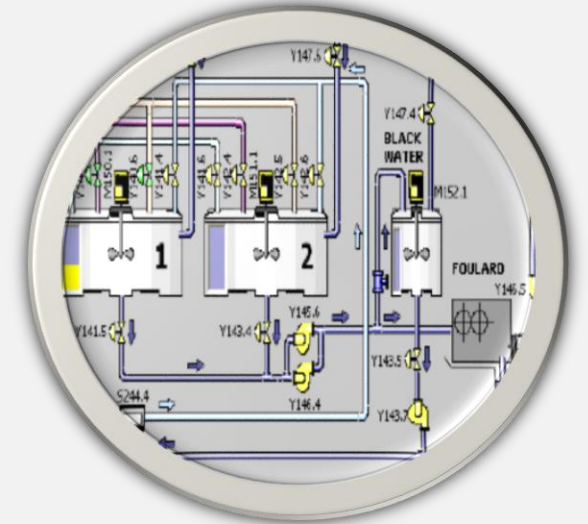
- Working width: up to 6000 mm
- Speed: up to 300 m/min
- Pressure: up to 150 N/mm
- Calibration:  $\pm 0.015$  mm
- Working temperature: up to 300°C
- Rolls: Flat/Embossed
- Deflection control: S roll, cross axis
- Heating: Electric, thermal oil



# PADDER FOR IMPREGNATION BY CHEMICAL BINDER OR FOAM

## TECHNICAL CHARACTERISTICS

- Working width: up to 6000 mm
- Speed: up to 150 m/min
- Pressure: up to 120 N/mm
- Rolls opening: 120mm
- Flotating roller: Varriable chamber
- Roller surface: chromated, rubber and Teflon coated





# OMEGA DRYER

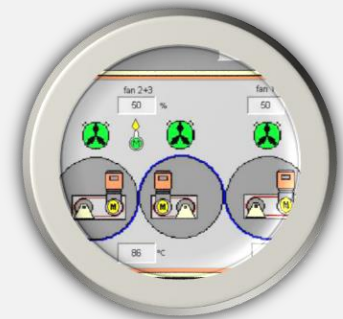
## TECHNICAL CHARACTERISTICS

- Working width: up to 5600 mm
- Speed: up to 300 m/min
- Drum diameter: up to 3000 mm
- Working temperature: up to 230°C
- Temperature precision:  $\pm 1^{\circ}\text{C}$
- PLC temperature controlled
- Energy recovery system
- Pinning system

# DRUM DRYER

## TECHNICAL CHARACTERISTICS

- Working width: up to 5600 mm
- Speed: up to 300 m/min
- Drum diameter: up to 3000 mm
- Drying temperature: max 230°C
- Curing temperature: max 270°C
- Temperature precision:  $\pm 1^{\circ}\text{C}$
- PLC temperature controlled
- Energy recovery system
- Automatic threading system



# AUTOMATIC WINDERS

## TECHNICAL CHARACTERISTICS

- Working width: up to 8000 mm;
- Speed: up to 120m/min;
- Roll diameter: 250-2500 mm
- Store for carton core with automatic system
- threading system

[www.lisciotto-srl.com](http://www.lisciotto-srl.com)